

# PLATFORM TRUCKS



P/N

PTK2436S1-Q

Shown with 86151 casters and smooth deck.



P/N

PTK2436T1-Q

Shown with 86151 casters and tread deck.



P/N

PTK3060C4FQ

Shown with 86151 casters, carpeted deck, full perimeter bumper and handles with cross braces.

- Heavy-duty light aluminum
- Designed for tough job service, load handling, versatility and long life
- One handle standard with a height of 26-½" from the base of the platform (second handle optional)
- Durable extruded corner sockets integrated with frame so handle fits tightly and securely
- 1,600 to 3,000 pound capacity
- Reinforced box-frame construction for strength and durability
- Caster brake option can be safely activated for maximum load control

## BASE WEIGHT STANDARD SPECIFICATIONS

BED SIZE	SMOOTH/CARPET	TREAD
24 x 36	36	41
24 x 42	39	44
24 x 48	42	48
24 x 60	47	54
30 x 48	46	53
30 x 60	52	60
30 x 72	59	68
36 x 48	53	60
36 x 60	61	69
36 x 72	69	78

(base weight = deck and one handle, no casters)

## Accessories



P/N	W"	WT.(LBS)
330163	24	4.5
330164	30	5.0
330165	36	5.5

Handle with two cross braces help hold load in place.



P/N	D"	WT.(LBS)
86067	5	0.6
86069	8	0.8

Foot-operated, friction-type brake engages tire surface. Attaches to swivel caster.



P/N	D"	W"	WT.(LBS)
Varies	1	1-1/8	Varies

Full perimeter gray non-marking rubber bumpers reduce damage to walls and doors.

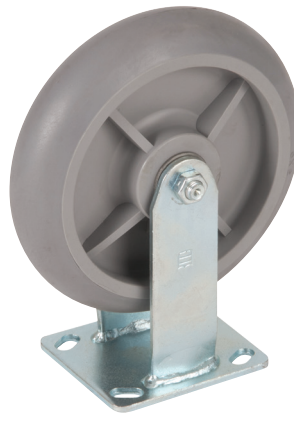
# PLATFORM TRUCKS

## Casters



P/N	D"	W"	WT.(LBS)
86135	5	2	18.0
86151	8	2	24.0

Black thermoplastic rubber on a polyolefin core. Easy to push and roll with flat, hard tread. Limited noise absorption. Performs well on all surface conditions.



P/N	D"	W"	WT.(LBS)
86137	5	2	17.0
86139	8	2	23.0

Gray thermoplastic rubber on a polyolefin core. Round tread, non-marking, good shock and noise absorption. Easy starting and rolling.



P/N	D"	W"	WT.(LBS)
86138	5	2	18.0
86152	8	2	25.0

Maroon polyurethane on a polyolefin core. Resistant to water, chemicals and solvents. Hard tread for easy rolling. Limited noise absorption. Performs well on all surface conditions.

CASTER KIT**			WHEEL CONSTRUCTION					SWIVEL CASTER			RIGID CASTER		
A = 1 BRAKE B = 2 BRAKES	SIZE DIA. X WIDTH	CAP. SET OF 4 (LBS.)	TREAD HARDNESS	TREAD COLOR	HUB COLOR	BEARING TYPE	TEMP. RANGE	LOAD HT.	PART NO. (B = BRAKE)	SWIVEL RADIUS	APPROX. WGT.*(LBS.)	PART NO.	APPROX. WGT.*(LBS.)
86135 86135A 86135B	5" x 2"	1,600	65 ±5 durometer A-scale	black	light gray	Roller	-45° to +180°F	6½"	13057 13057B	4¼	4.35 4.95	13058	3.55
86151 86151A 86151B	8" x 2"	2,800	65 ±5 durometer A-scale	black	light gray	Roller	-45° to +180°F	9½"	130076 130076B	6	5.8 6.6	130075	4.95
86137 86137A 86137B	5" x 2"	1,600	65 ±5 durometer A-scale	light gray	light gray	Roller	-45° to +180°F	6½"	13053 13053B	4¼	4.2 4.8	13054	3.45
86139 86139A 86139B	8" x 2"	2,800	65 ±5 durometer A-scale	light gray	light gray	Roller	-45° to +180°F	9½"	13063 13063B	6	5.55 6.35	13064	4.7
86138 86138A 86138B	5" x 2"	3,000	55 ±5 durometer A-scale	maroon	light gray	Roller	-45° to +180°F	6½"	13059 13059B	4¼	4.4 5	13060	3.6
86152 86152A 86152B	8" x 2"	3,000	55 ±5 durometer D-scale	maroon	light gray	Roller	-45° to +180°F	9½"	130077 130077B	6	6.05 6.75	130078	5.2

\* Caster only

\*\* All Caster Kits include 2 rigid and 2 swivel casters and attaching hardware.



www.aelift.com

Allstate Equipment Company Inc  
1201 McCloud Rd | Chesapeake, VA 23320 | USA

☎ sales@aelift.com