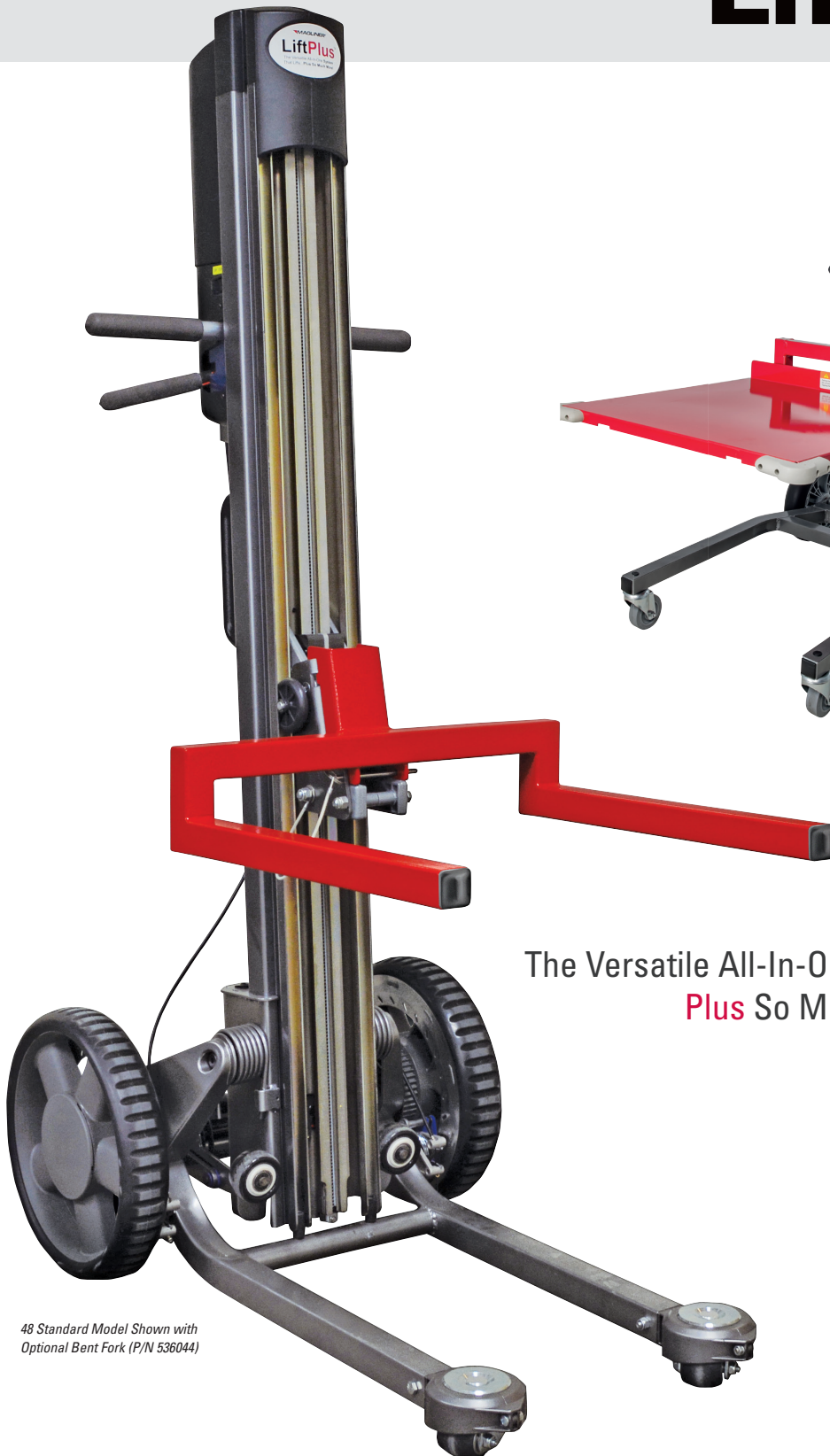


# LiftPlus®



*48 Standard Model Shown with  
Optional Bent Fork (P/N 536044)*



*33 Lite Model Shown with Optional  
One-Piece Platform (P/N 536130)*

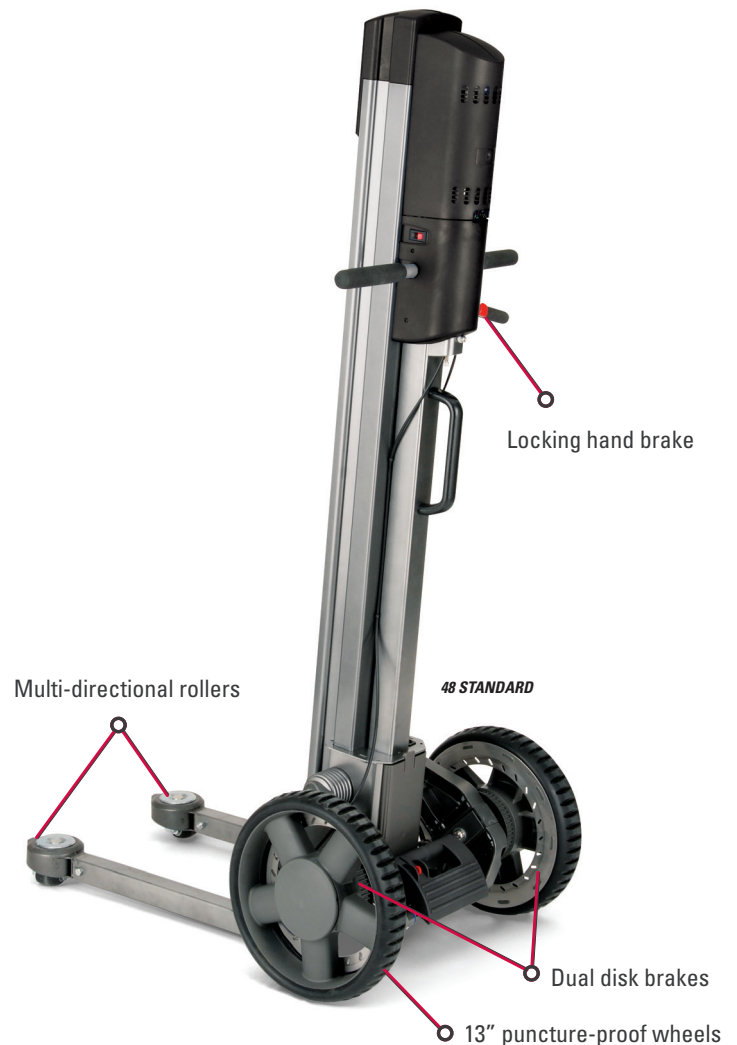
The Versatile All-In-One System That Lifts...  
**Plus** So Much More!

## INCREASE PRODUCTIVITY AND REDUCE JOB-RELATED INJURIES WITH THIS ALL-IN-ONE STACKER, TRANSPORTER, AND POSITIONER.

- Minimizes bending and stretching
- Narrow footprint fits through most doorways and tight spaces; no fork truck required
- Provides variable height work surface
- Supports diverse loading requirements
- Electric screw drive lift system provides smooth, quiet operation
- Quick change adapter allows easy changes between attachments
- Up to 350 lb. lifting capacity (120 lb. on high-speed models)
- Lifts 2"/second (4"/second on high-speed models)
- Easy to operate; no certification required; see instructional video on [magliner.com](http://magliner.com)

### SPECIFICATIONS

|                                   | 48 STANDARD                            | 60 STANDARD | 72 STANDARD |
|-----------------------------------|--|-------------|-------------|
| Attachment height (fully lifted)  | 48"                                    | 60"         | 72"         |
| Attachment height (fully lowered) | 3.5"                                   | 3.5"        | 3.5"        |
| Overall height                    | 60"                                    | 72"         | 84"         |
| Overall depth                     | 37"                                    | 37"         | 37"         |
| Weight (base unit)                | 101 lbs.                               | 108 lbs.    | 114 lbs.    |
| High speed option                 | Yes                                    | Yes         | No          |
| Battery capacity (median load)    | 125-150 lift cycles when fully charged |             |             |
| Overall width (14" chassis)       | 25"                                    | 25"         | N/A         |
| Overall width (25" chassis)       | 33"                                    | 33"         | 33"         |
| Chassis width                     | 14" or 25"                             | 14" or 25"  | 25"         |



## TAKE ADVANTAGE OF THE BENEFITS OFFERED BY THE LIFTPLUS STANDARD, NOTING THE FOLLOWING EXCEPTIONS:

- Two-piece design allows for mobile applications
- Up to 150 lb. lifting capacity
- Lifts 2"/second

### SPECIFICATIONS

#### 33 LITE

|                                   |  |
|-----------------------------------|--|
| Attachment height (fully lifted)  | 33"                                    |
| Attachment height (fully lowered) | 6"                                     |
| Overall height                    | 49"                                    |
| Overall depth                     | 42"                                    |
| Weight (base unit)                | 71 lbs.                                |
| Weight (column only)              | 44 lbs.                                |
| Weight (chassis only)             | 27 lbs.                                |
| High speed option                 | No                                     |
| Battery capacity (median load)    | 125-150 lift cycles when fully charged |
| Overall width                     | 23.5"                                  |
| Chassis width                     | 22"                                    |



# Attachments

## ONE SYSTEM. MANY TOOLS.

*Quickly handle a variety of tasks with the LiftPlus.*

### WORK BENCH



| P/N    | W" | L" | WT.(LBS.) |
|--------|----|----|-----------|
| 536017 | 18 | 18 | 23.5      |

Platform length expands up to 28". Work clamps, vice, handle, and load-securing back bar included.

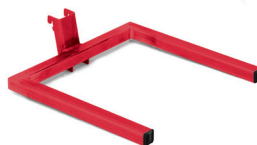
### BENT FORK



| P/N    | W" | L" | WT.(LBS.) |
|--------|----|----|-----------|
| 536044 | 21 | 18 | 12.5      |

3.5" height from floor. *Available with 14" chassis only. Not available with Lite model.*

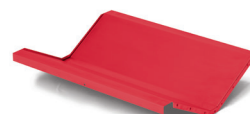
### STRAIGHT FORKS



| P/N    | W"   | L"   | WT.(LBS.) |
|--------|------|------|-----------|
| 536053 | 18.5 | 18.5 | 11.0      |
| 536048 | 20   | 32   | 16.0      |
| 536060 | 21   | 18   | 11.5      |

5" height from floor.

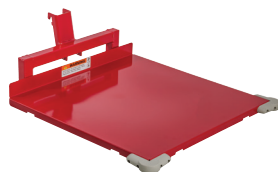
### V-TRAY



| P/N    | W" | L"   | WT.(LBS.) |
|--------|----|------|-----------|
| 536054 | 19 | 24.5 | 10.0      |

Accommodates cylindrical products 4" to 24" (requires 536053 fork attachment).

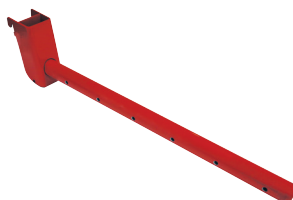
### ONE-PIECE PLATFORM



| P/N    | D" | L" | WT.(LBS.) |
|--------|----|----|-----------|
| 536130 | 26 | 26 | 26        |

One piece design includes corner bumpers and cargo strap attachment points (strap not included). *Available with Lite model only.*

### ARBOR



| P/N    | D"  | L" | WT.(LBS.) |
|--------|-----|----|-----------|
| 536039 | 1.5 | 24 | 7.5       |

Accommodates rolled material.

### BOOM AND CHAIN



| P/N    | D"    | L" | WT.(LBS.) |
|--------|-------|----|-----------|
| 536088 | 1.875 | 24 | 5.5       |

Adjustable boom plus chain/hook assembly (requires 536039 arbor attachment). *Not available with Lite model.*

### PAIL LIFTER



| P/N    | D" | L" | WT.(LBS.) |
|--------|----|----|-----------|
| 536093 | 14 | 16 | 11.0      |

Accommodates three 5-gallon pails. Hook height adjustable 3" to 34" high from top of forks. *Not available with Lite model.*

### STEEL PLATFORMS



| P/N    | W" | L" | WT.(LBS.) |
|--------|----|----|-----------|
| 536025 | 24 | 24 | 15.5      |

Requires 536044 or 536060 fork attachment.



| P/N    | W" | L" | WT.(LBS.) |
|--------|----|----|-----------|
| 536033 | 34 | 34 | 30.0      |

Requires 536048 fork attachment.



| P/N    | W"   | L" | WT.(LBS.) |
|--------|------|----|-----------|
| 536103 | 21.5 | 19 | 30.0      |

Requires 536060 fork attachment. 18" W x 17.75" L usable surface in center. *Available with 25" chassis only.*

**Have a special application?**

*Call us today to discuss a custom attachment.*



## Options and Accessories

### ERGO HANDLE



| P/N    | WT.(LBS.) |
|--------|-----------|
| 532128 | 5.25      |

Three-position handle provides additional grip points for increased comfort and maneuverability. *Not available with Lite model.*

### TOTE BAG



| P/N    |
|--------|
| 534500 |

Use the tote bag to store the remote and work bench accessories securely on the unit.

### BATTERY CHARGER



| P/N   |
|-------|
| 63027 |

External battery charger allows you to charge an extra battery while the lift truck is in use to reduce downtime.

### REMOTE



| P/N    |
|--------|
| 534200 |

Tethered remote allows user to actuate lifting and lowering up to 6' away.

### TOTAL-LOCK CASTER



| P/N    | H"  | WT.(LBS.) |
|--------|-----|-----------|
| 130035 | 3.5 | 1.6       |

Casters can swivel and lock independently, in any direction. *Option available on Lite model only.*

## ONE SYSTEM. MANY TOOLS.





[www.aelift.com](http://www.aelift.com)

📍 Allstate Equipment Company Inc  
1201 McCloud Rd | Chesapeake, VA 23320 | USA

☎  
(757) 545.1900  
✉ [sales@aelift.com](mailto:sales@aelift.com)