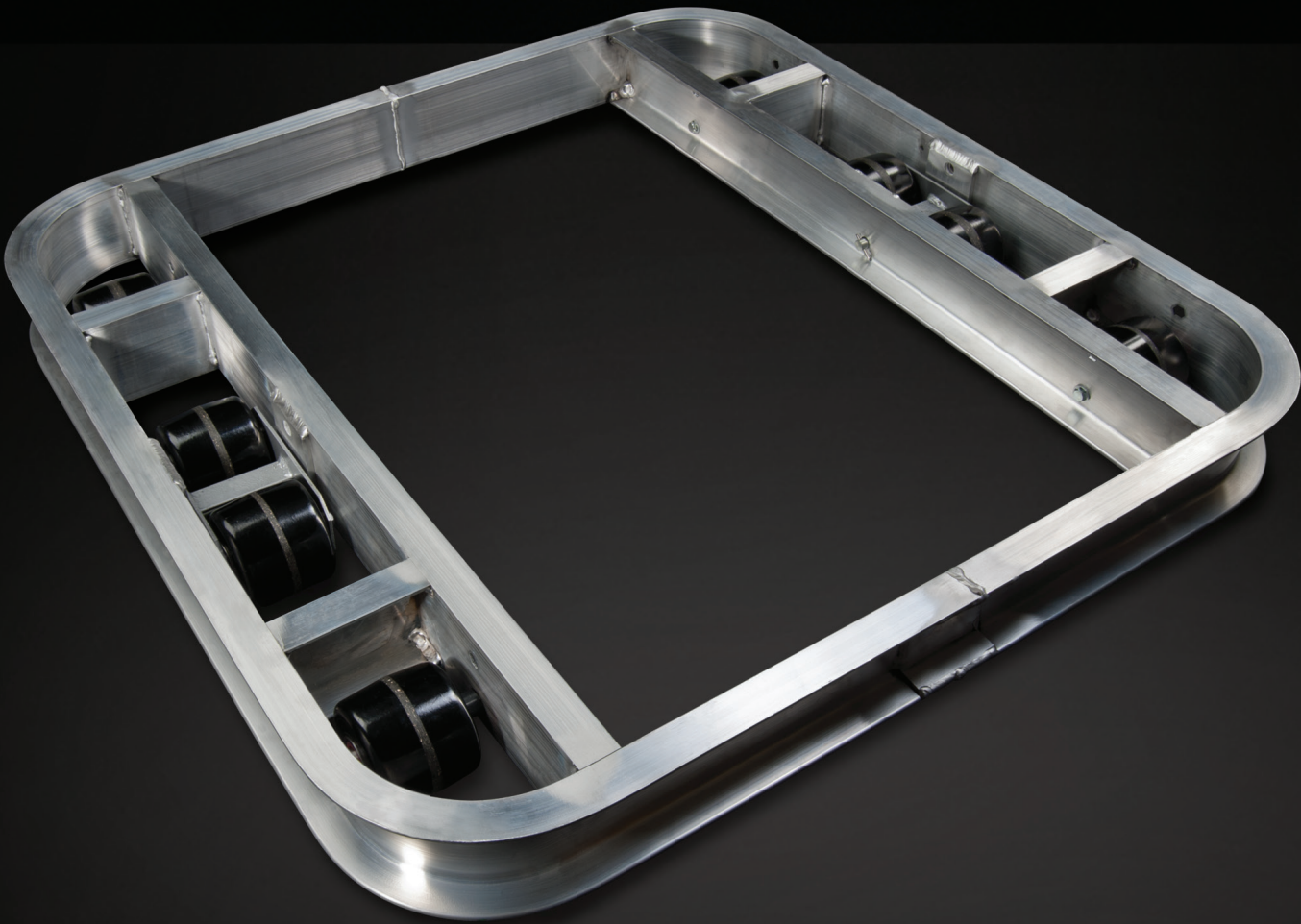


# PALLET DOLLIES



 **MAGLINER**®

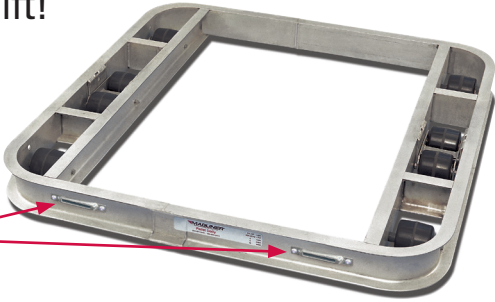
1-800-MAGLINE (624-5463)  
[www.magliner.com](http://www.magliner.com)

# PALLET DOLLIES

## Don't Wait For a Forklift!

P/N	WT.(LBS.)
PDN424208	39.0

Includes Mag-Loc® anchors P/N 302945

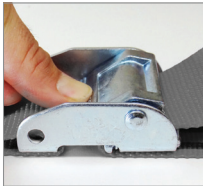


- Easy access to any pallet load, increases safety and productivity
- Lightweight, heavy-duty aluminum channel frame construction
- Rounded corners for safety
- Steel hexagonal axles interlock with frame to prevent rotation
- Compatible with all pallet systems: wood - metal - plastic - slip sheet
- Available in non-tilt and tilt design to enable turning
- Mag-Loc E-Track anchors standard on all Magliner pallet dollies (2 per side)

SPECIFICATIONS		
Available widths	36", 42" or 48"	
Available lengths	36", 42" or 48"	
Height from floor	4-½"	
Weight (range)	30 – 47 lbs.	
Capacity for PDN (non-tilt models)		
	Phenolic	TPU
6 roller, 2 center rollers	4,000 lbs.	3,000 lbs.
8 roller, 4 center rollers	6,000 lbs.	4,000 lbs.
10 roller, 6 center rollers	8,000 lbs.	5,000 lbs.
Capacity for PDT (tilt models)		
	Phenolic	TPU
6 roller, 2 center rollers	3,600 lbs.	2,000 lbs.
8 roller, 4 center rollers	5,400 lbs.	3,000 lbs.
10 roller, 6 center rollers	7,200 lbs.	4,000 lbs.

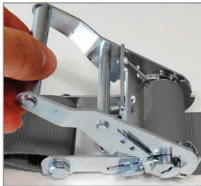
## STANDARD OPTIONS

### Mag-Loc® CONTAINMENT SYSTEM



P/N	W"	L'
302923	2	8
302922	2	12
302924	2	16

Cam strap has 3,000 lb. break strength and 1,000 lb. working load with 6,000 lb. rated weather resistant polyester webbing.



P/N	W"	L'
302926	2	8
302927	2	12
302928	2	16

Ratchet strap has 4,400 lb. break strength and 1,467 lb. rated weather resistant polyester webbing.

- Four Mag-Loc anchors are standard on all pallet dolly models
- Low profile for mounting virtually anywhere
- Hole design fits both round screws and carriage bolts
- Easy and quick to install
- Patented exclusive design

P/N
302945



P/N
302941

Pan head screw double set secures to metal.

P/N
302942

Carriage bolt double set secures to metal.

### HORIZONTAL CENTER BRACE



Adds additional load support (center brace not compatible with Towing Hitch option).

### ROLLERS



P/N	D"	W"	WT.(LBS.)
140104	3.5	3	1.45

Thermoplastic polyurethane non-marking roller with semi-precision bearings (required for towing option).



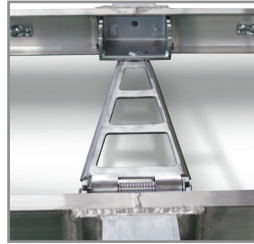
P/N	D"	W"	WT.(LBS.)
140101	3.5	3	1.35

Phenolic non-marking roller with semi-precision bearings (standard).

# TOWING HITCH

*Allows multiple pallet dollies to be towed at a time. 5 mph maximum towing speed.*

- Improve material flow and cycle efficiency
- Reduce inventory and material handling
- TPU rollers required



TOWING QUANTITY (UP TO)	WT. CAP.
Five (6 roller) dollies	10,000 lbs.
Four (8 roller) dollies	12,000 lbs.
Three (10 roller) dollies	12,000 lbs.



TOWING KITS		
P/N	DESCRIPTION	WT.(LBS.)
35020	36" long dollies	14.0
35021	42" long dollies	14.5
35022	48" long dollies	15.0

Towing kits include hitch system, center cross brace and hardware.

Welded roller cover is required for use with any pallet style with legs (including: sheet molded plastic and corrugated formed pallets)

## TOWING HITCH OPTIONS

### HANDLE



HANDLE		
P/N	DESCRIPTION	WT.(LBS.)
35023	Includes a handle, hitch bracket and hardware	14.5

### ROLLER



P/N	D"	W"	WT.(LBS.)
140104	3.5	3	1.45

Thermoplastic polyurethane non-marking roller with semi-precision bearings (required for towing option).

**SEE THE PALLET  
DOLLIES IN ACTION**  
Magliner.com or launch  
Magliner on YouTube.





[www.magliner.com](http://www.magliner.com)



Magline, Inc. ■ 1205 West Cedar Street ■ Standish, MI 48658  
1.800.MAGLINE (624.5463) ■ (989) 512.1000 (Outside U.S. & Canada) ■ Fax: (989) 803.5941

© COPYRIGHT 2016, MAGLINE, INC. – FORM B7552